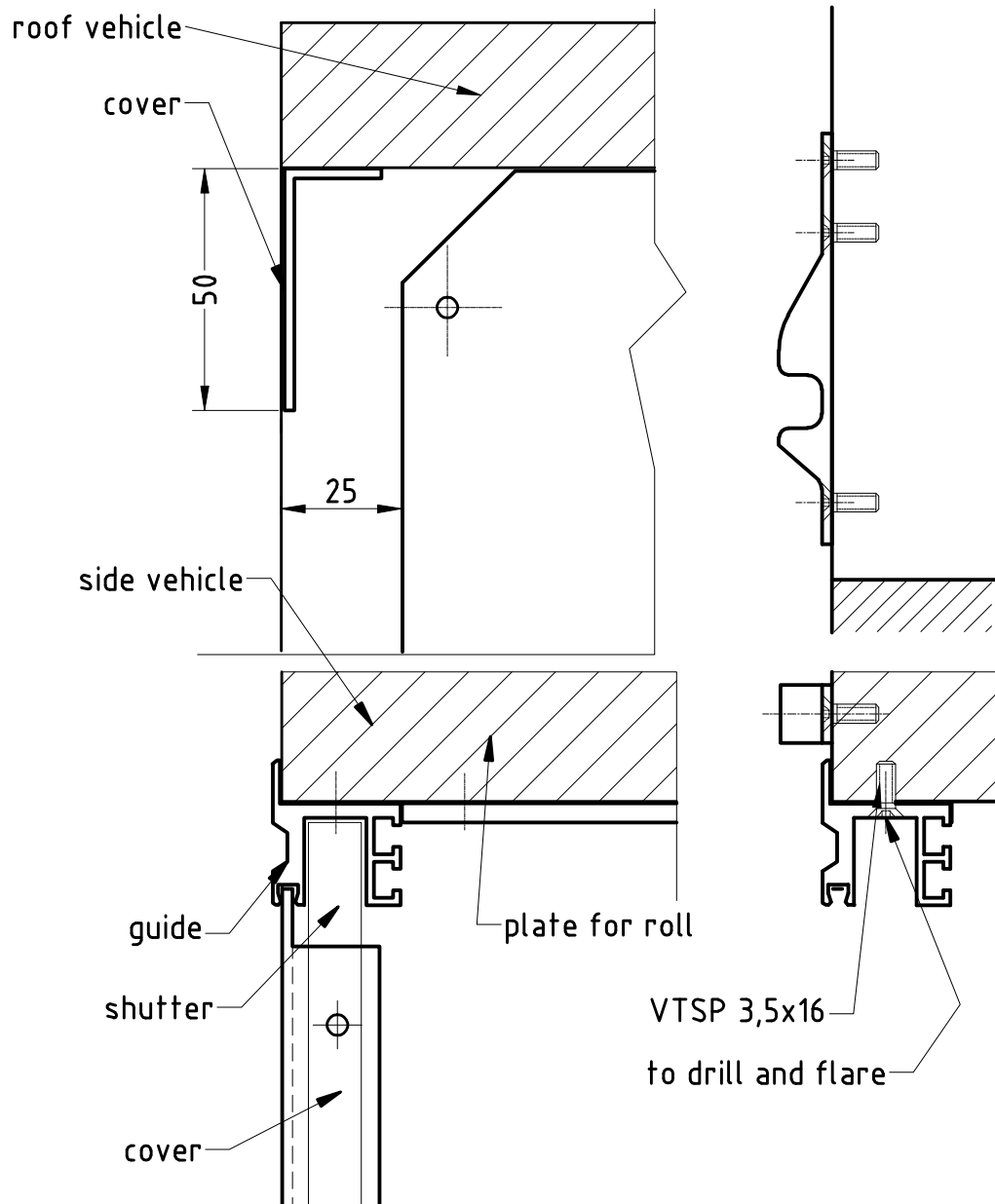


70178.0E



- 1) Mount the ledge profile lower
- 2) Position the guide
- 3) Mount the upper cover
- 4) Position the weeled plates and the mounted bearing to the guides (see drawing)
- 5) Fix the plate
- 6) Insert the roller in the correct position as shown in the spares drawing (see enclosure)
- 7) Remove the guides
- 8) Insert the roller shutter in the opening from the front side (roller shutter is as shown in the spares drawing)
- 9) Remount and fix the guides
- 10) Fix the belts on the preloaded roller (see enclosure)
- 11) To free the safety pin from the roller, to rotate with the hands in the direction of arrow and to release (N.B. The shutter not to roll up on the roller). If not preloaded, wind in the direction of the arrow and to check the number of revs fit on the roller
- 12) Fix the aglass on the out side (low position)
- 13) Fix the aglass on the out side (high position)
- 14) Fix the gutter profile (if requested/supplied)
- 15) Grease sliding guides

NB serial cover can be replaced (by assembler) by a structure built-in-to the vehicle (i.g. bodywork)